

STANDARD ANCHOR SCREW-IN ANCHOR

Environmental anchoring



SOLID SMOOTH SHAFT AND HELIX DISC

Fastened with bow shackle-type welded eyelet

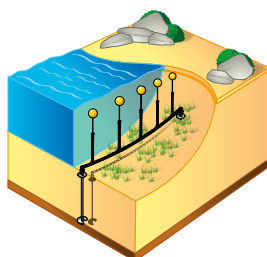


SINGLE DISC

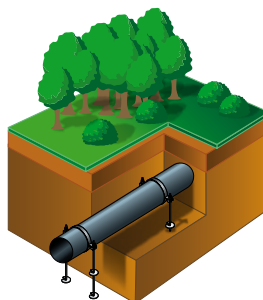
ONE-PIECE GALVANISED WELDED NAUTICAL EYELET

Shaft (L x Ø in mm)	Disc (Ø x thickness in mm)
1000 x 18	150 x 3
1250 x 18	200 x 4
1500 x 18	200 x 4
750 x 20	200 x 4
1000 x 20	200 x 4
1500 x 20	200 x 6
1000 x 25	200 x 6
1000 x 25	250 x 8
1500 x 25	250 x 8
2000 x 25	250 x 8

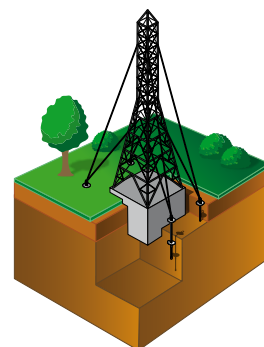
Different uses



Buoy anchoring



Securing land pipelines



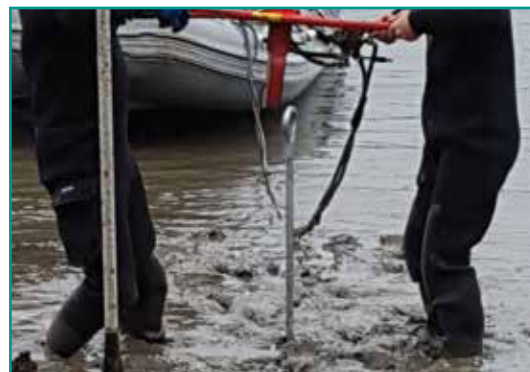
Anchoring high-voltage lines



DOUBLE DISC

ONE-PIECE GALVANISED WELDED NAUTICAL EYELET

Shaft (L x Ø in mm)	Disc (Ø x thickness in mm)
1200 x 30	200 x 6
1500 x 30	200 x 6
1500 x 30	250 x 8
2000 x 30	250 x 8
2500 x 30	250 x 8



Finish: raw, stainless steel or hot-dip galvanised based on EN ISO 1461 standard